

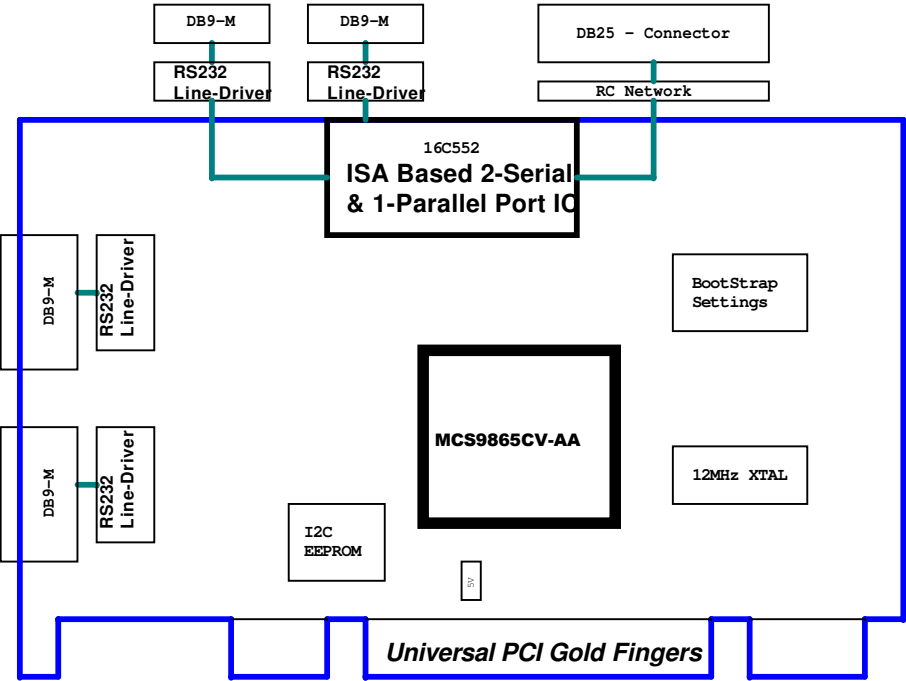
Design Details : MCS9865CV-AA
Evaluation Board : MCS9865CV-AA EVB - Combo
CHIP : MCS9865CV-AA UPCI Based Peripheral Controller
Title : MCS9865CV-AA based 4S1P Application
Assembly :128 Pin LQFP Package Outline

All information contained in this document is subject to change without notice. This document is Preliminary. The information contained in this document is provided on an " AS IS" Basis. In no event will ASIX be liable for damages arising directly or indirectly from any use of the information contained in this document.

For technical queries write to support@asix.com.tw

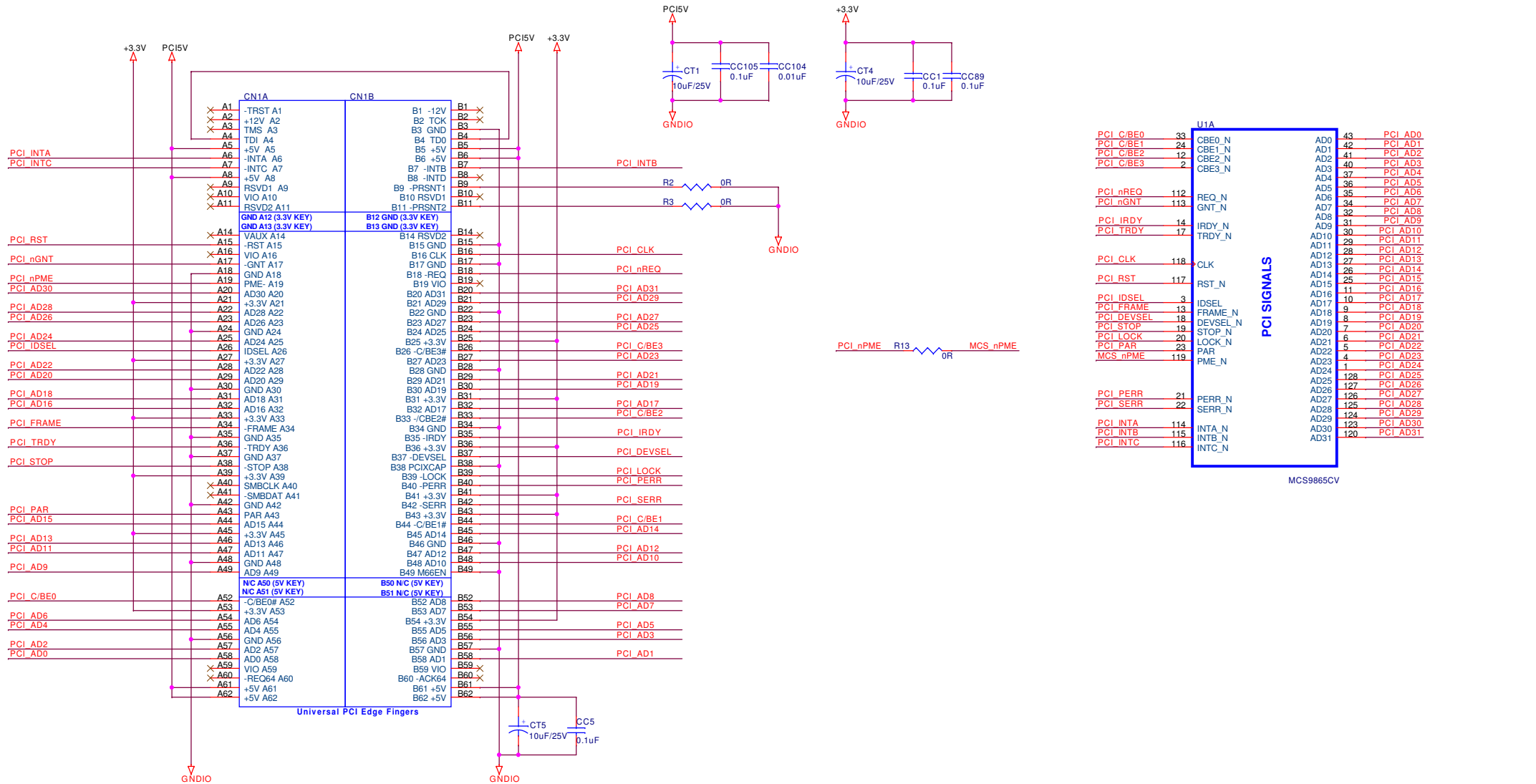
- Note : 1. " - NP " Refers to DO NOT POPULATE. These are extra provisions and not required for Normal Operation
2. All Resistors can be" +/- 5 %" tolerance unless specified.
3. Use " +/- 10% " tolerance capacitors unless specified otherwise.

MCS9865CV-AA 4S1P : Application Block Diagram

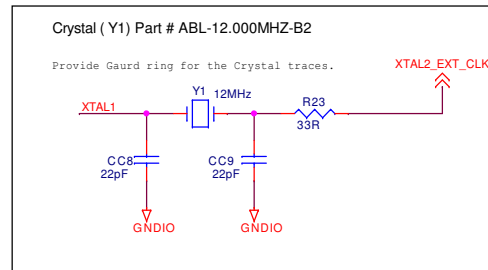
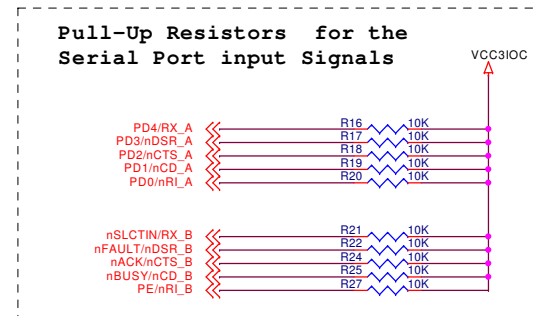
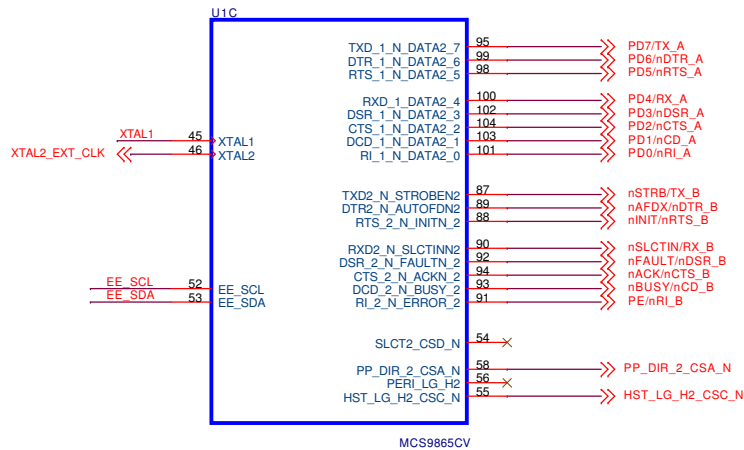


Note:
Power Management circuitry is not implemented in this Revision of schematics.

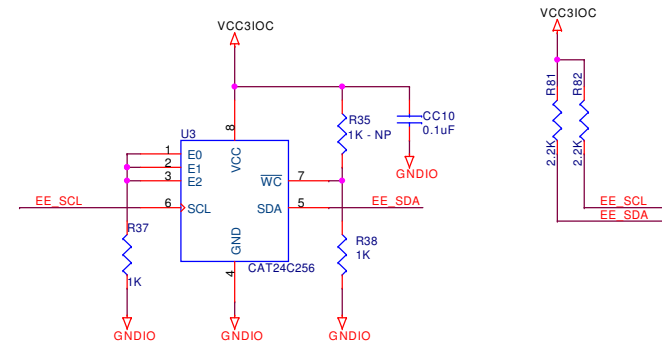
ASIX ELECTRONICS CORPORATION		
Title MCS9865CV-AA Block Diagram		
Size A4	Document Number MCS9865CV-AA Based 4S1P	Rev 1.00
Date: Thursday, August 18, 2011	Sheet 1	of 8

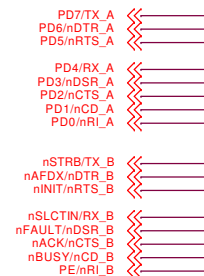
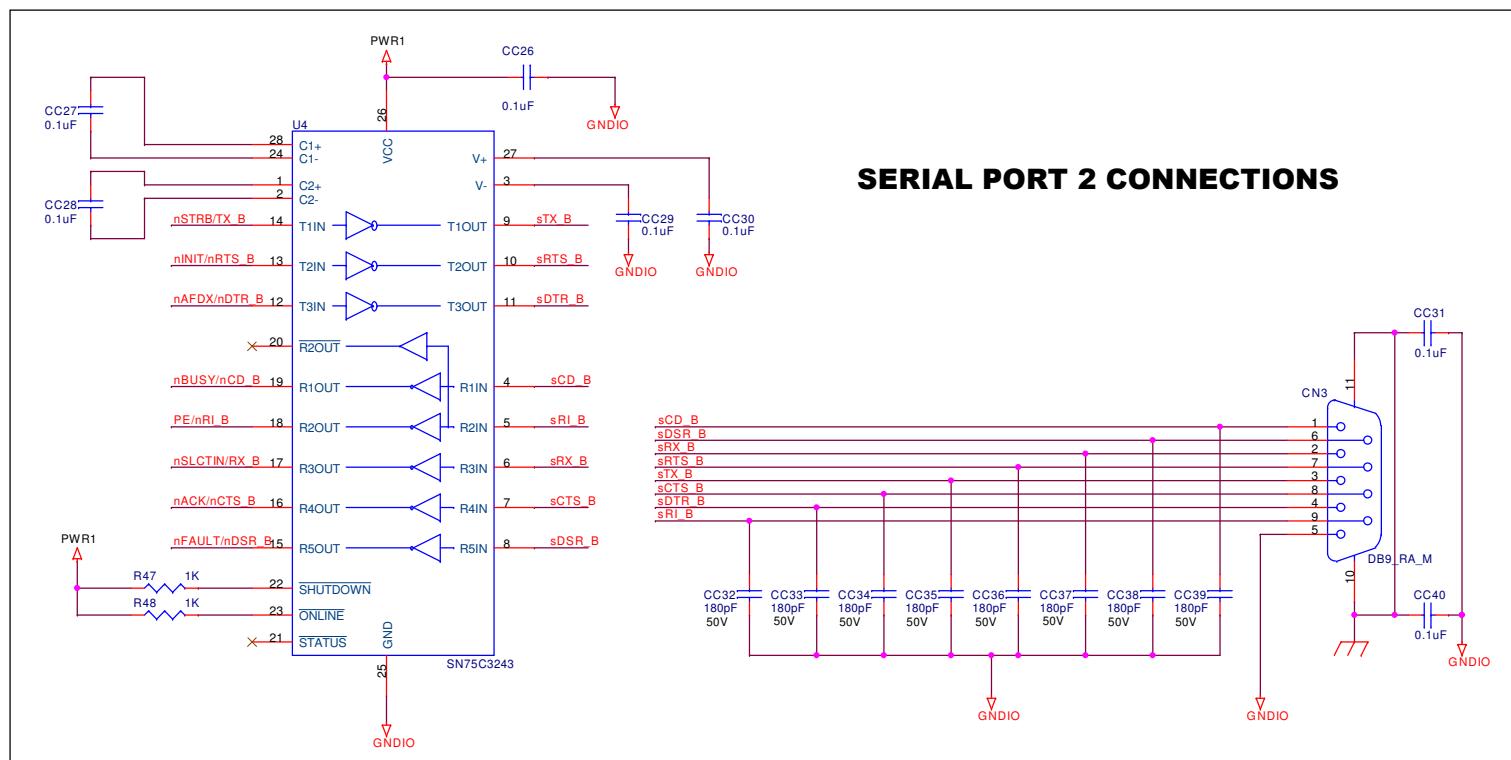
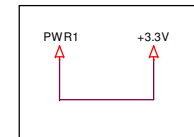
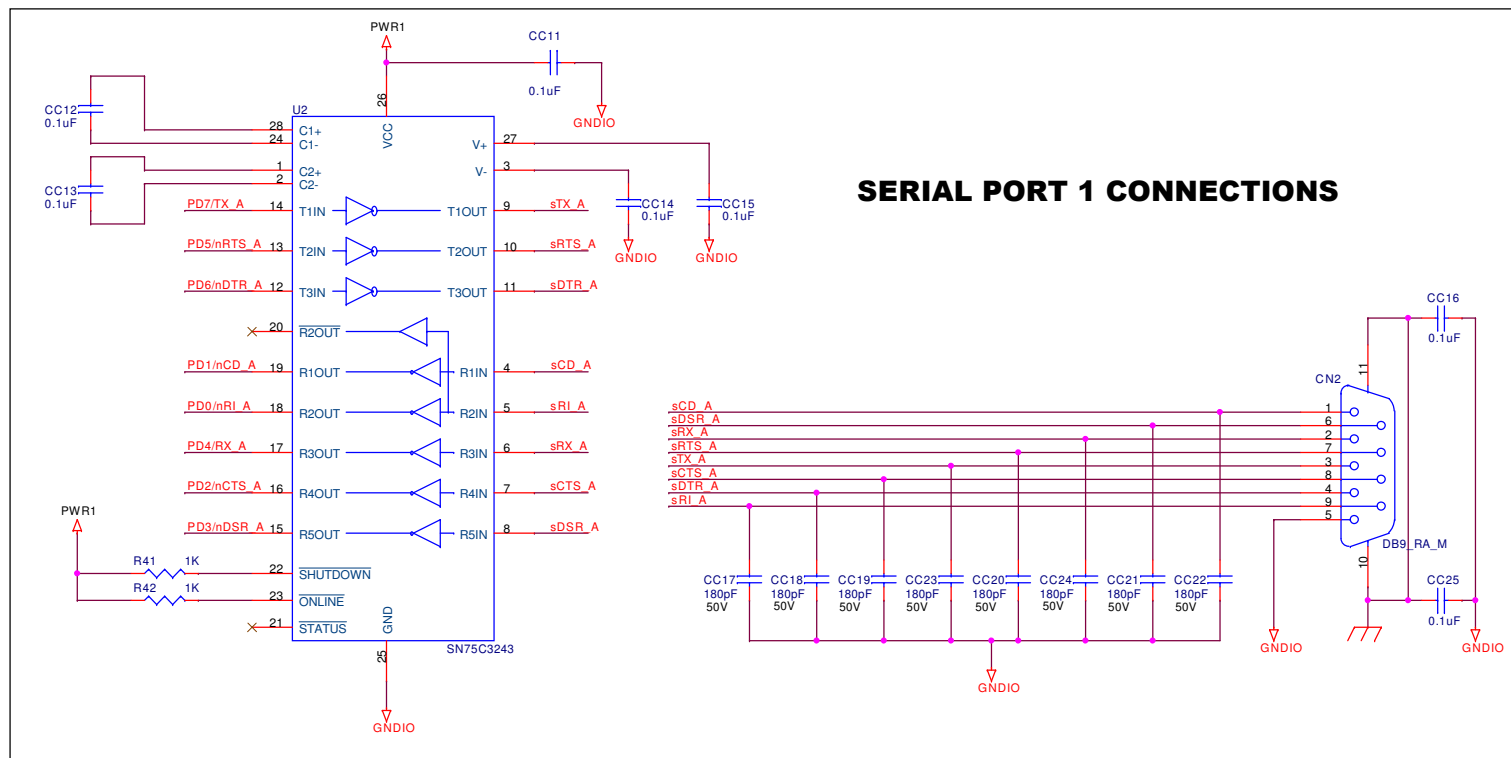


U1A		
PCI C/BE0	33	CBE0_N
PCI C/BE1	24	CBE1_N
PCI C/BE2	12	CBE2_N
PCI C/BE3	2	CBE3_N
PCI nREQ	112	REQ_N
PCI nGNT	113	GNT_N
PCI IRDY	14	IRDY_N
PCI TRDY	17	TRDY_N
PCI CLK	118	CLK
PCI RST	117	RST_N
PCI IDSEL	3	IDSEL
PCI FRAME	13	FRAME_N
PCI DEVSEL	18	DEVSEL_N
PCI STOP	19	STOP_N
PCI LOCK	20	LOCK_N
PCI PAR	23	PAR
MCS nPME	119	PME_N
PCI PERR	21	PERR_N
PCI SERR	22	SERR_N
PCI INTA	114	INTA_N
PCI INTB	115	INTB_N
PCI INTC	116	INTC_N



I2C EEPROM INTERFACE:

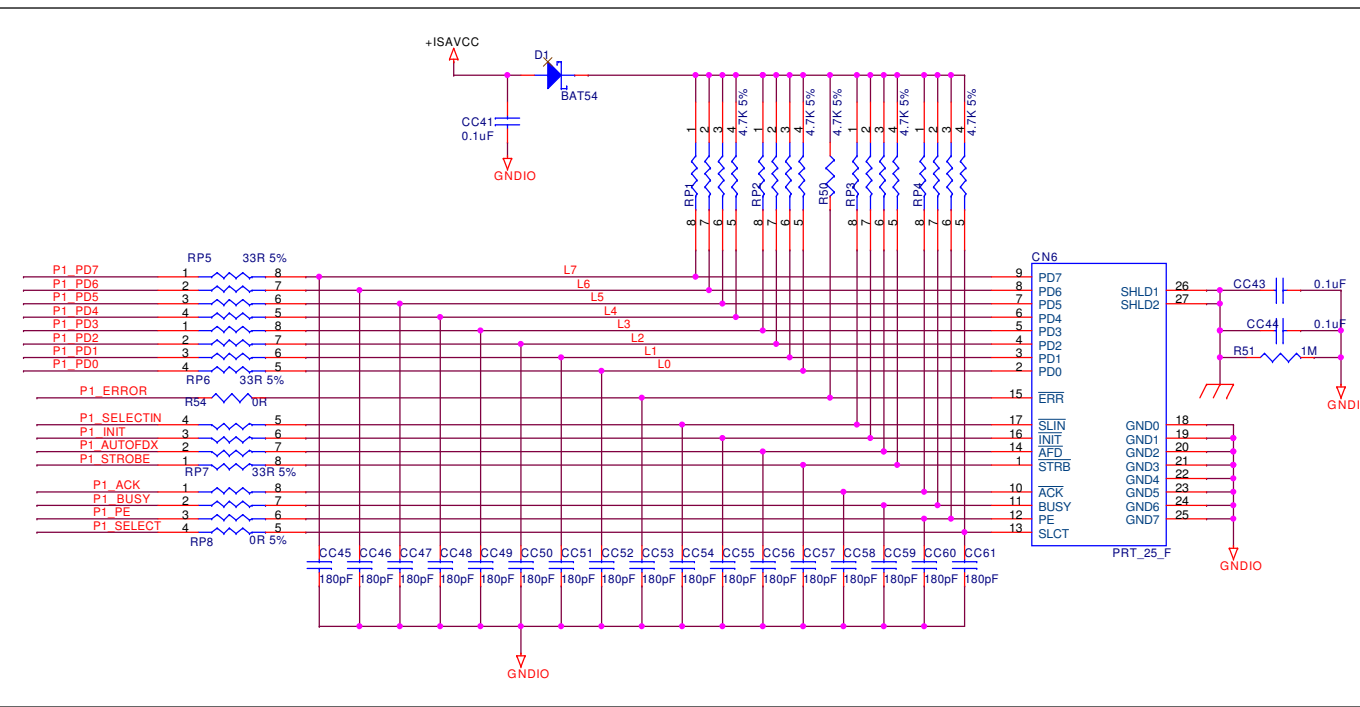
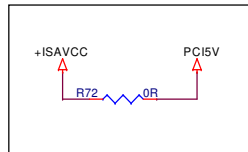
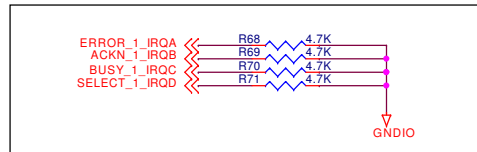
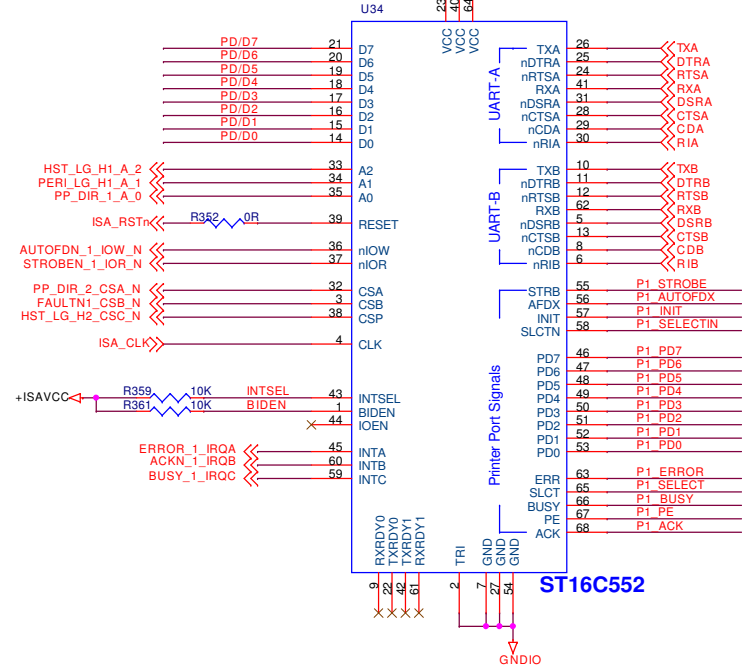
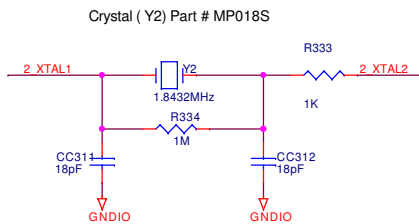
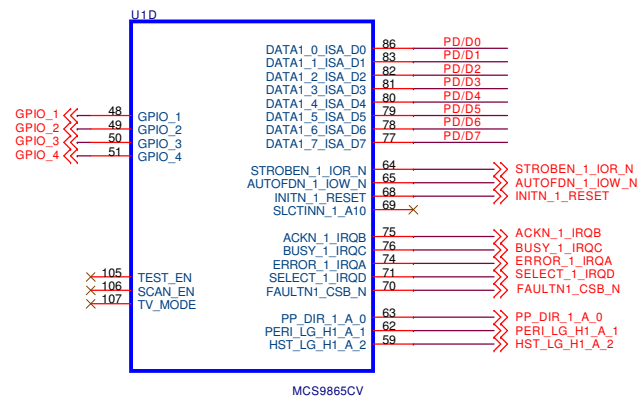




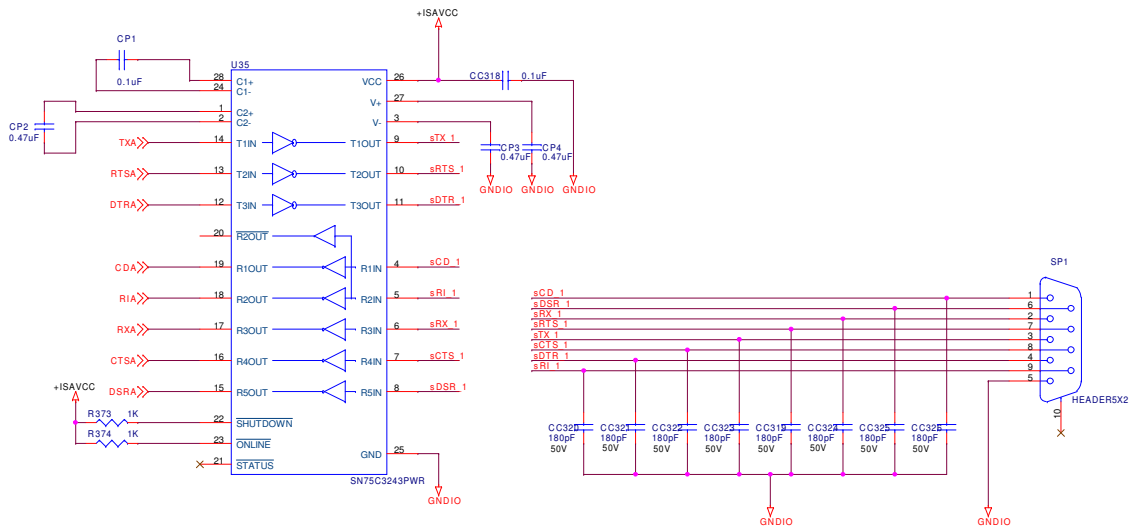
Note:

The 180pF capacitors for the Serial Port Signals are for EMI purpose only and are optional.

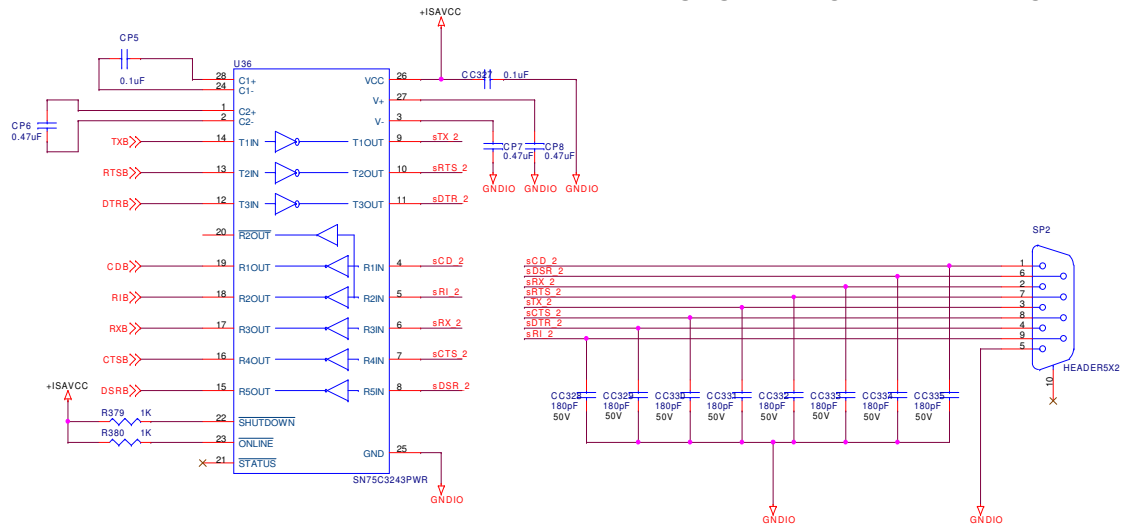
ASIX ELECTRONICS CORPORATION			
File SERIAL PORT INTERFACE			
Size A3	Document Number MCS9865CV-AA Based 4S1P		Rev 1.00
Date: Thursday, August 18, 2011	Sheet 4	of 8	



ISA SERIAL PORT 'A' INTERFACE



ISA SERIAL PORT 'B' INTERFACE



Note:
The 180pF capacitors for the Serial Port Signals are for EMI purpose only and are optional.

Revision History

Revision	Date	Comment
Ver.A	2008/04/22	Initial Release.
V1.00	2011/08/18	1.Changed to ASIX Electronics Corp. logo/strings and revision number format. 2.Added Revision History page.